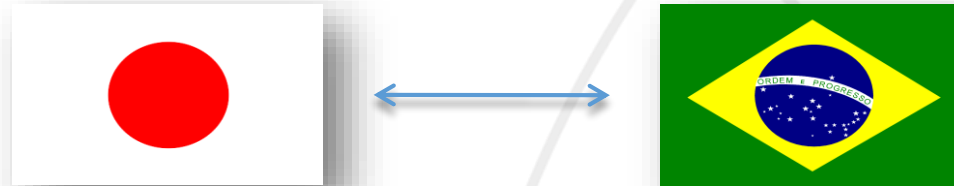




Brazilian Institute for Quality and Productivity

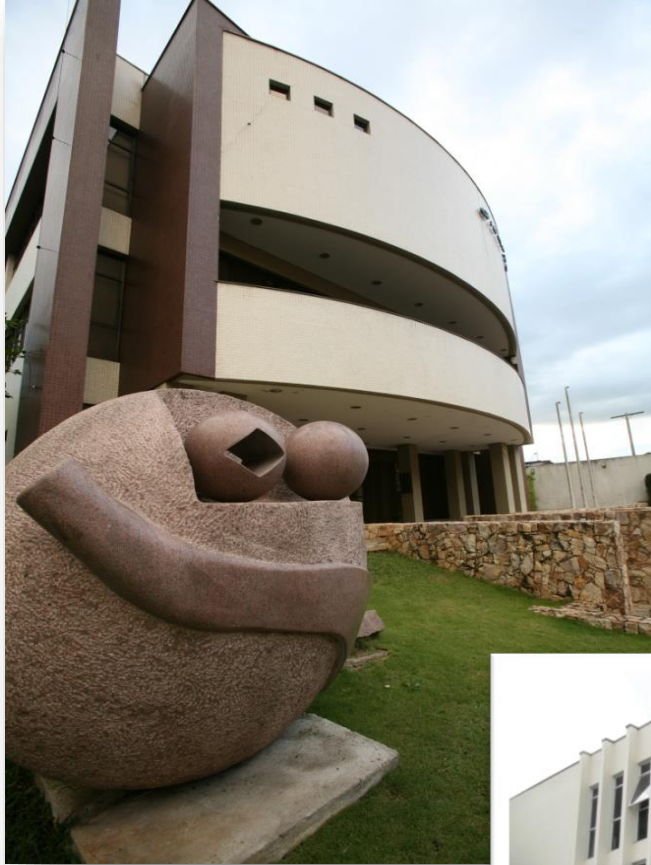
THE BEGINNING

Technical Cooperation



This agreement enabled the IBQP's technical and scientific training and development in modern and innovative concepts, methods and techniques related to business management aimed at increasing productivity and competitiveness.

ABOUT IBQP



The IBQP is a private, non-profit organization, qualified as Civil Society of Public Interest (OSCIP), made up of business and workers' entities, governmental and non-governmental organizations, academic institutions and citizens whose objective is to contribute to the sustainable development of the country through the constant improvement of productivity, quality and innovation in the organizations and institutions of the private and public sectors.



THE IBQP

OUR MISSION

Promote productivity, quality, excellence in management, entrepreneurship and innovation in public and private organizations.

OUR VISION

To be an international reference in solutions for sustainable development, productivity, quality, excellence in management and innovation.



THE IBQP

HOW WE ACT

IBQP is a provider of information and knowledge related to quality and productivity with courses, training, events, research and development of customized solutions, mainly in terms of management, entrepreneurship and innovation.

OUR PROJECTS

With the objective of continuous improvement of productivity, quality and innovation, we carry out actions and implement projects that seek the valuation of the knowledge used in practice, such as the Global Entrepreneurship Monitor (GEM), evaluation of the national level of entrepreneurial activity, the Paraná Competitive Movement (MPC) and (MBC) Brazilian Competitive Movement, which aims to qualify companies in Brazil to achieve improvement in the management of actions and objectives.

GEM



MAIN PARTNER



*Serviço Brasileiro de Apoio às
Micro e Pequenas Empresas*

PARTNERS



INTERNATIONAL INSTITUTIONS



Global Entrepreneurship Monitor

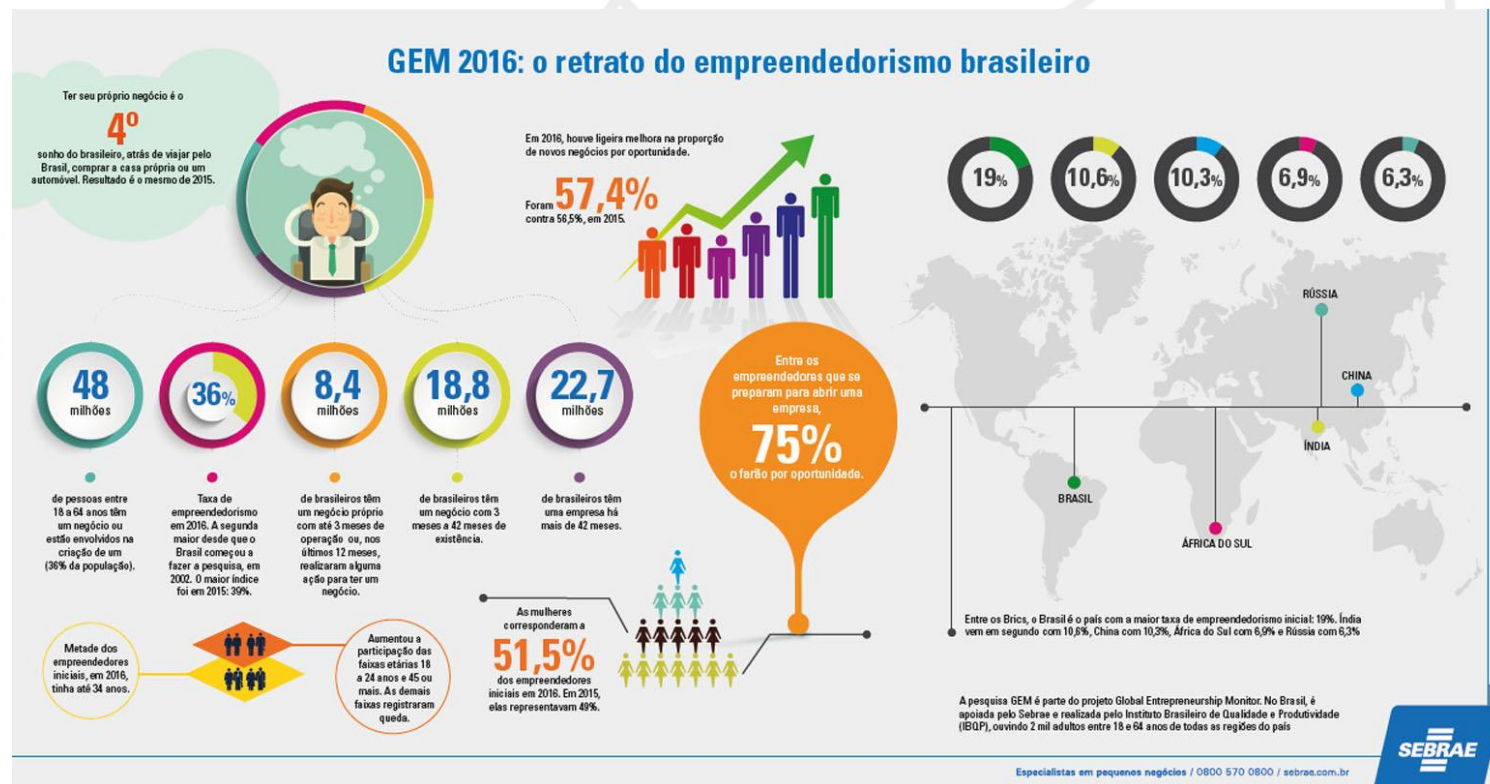
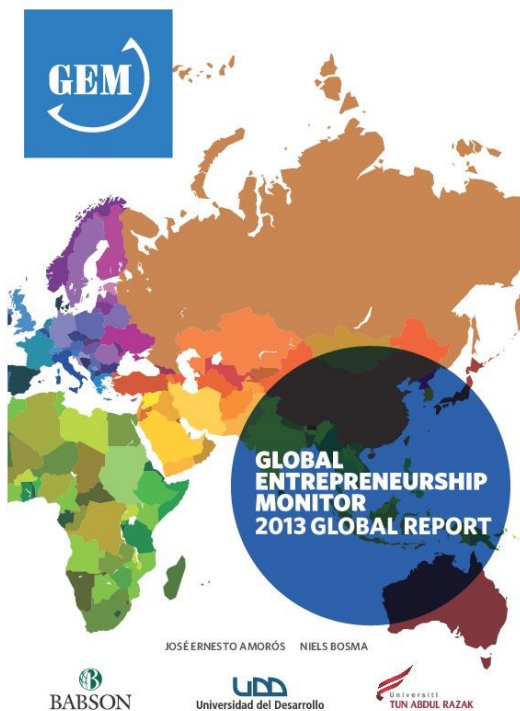


The Global Entrepreneurship Monitor research program is an annual evaluation that details the national level of entrepreneurial activity, considering the behavior of individuals related to the creation and management of the project.

It began in 1999 with the participation of 10 countries through a partnership between London Business School in England and Babson College in the United States. Brazil entered the research in 2000 through the agreement with IBQP as exclusive representative for the country.

Today, there are more than 80 participating countries. The results allow global comparisons, national reports and special topics based on the annual data collection cycle involving more than 300 academics and researchers.

GEM – Global Entrepreneurship Monitor - Brazil



GEM – Global Entrepreneurship Monitor - Brazil

The Global Entrepreneurship Monitor today has presence all over the country



Since 2000 IBQP performs annually more than 10.000 individual surveys in the country..

MPC – Paraná Competitive Movement



*movimento
paraná
competitivo*

AWARDS



MPE Brasil
PRÊMIO DE COMPETITIVIDADE
PARA MICRO E PEQUENAS EMPRESAS

SPONSORSHIP



PARTNERS



MPC – Paraná Competitive Movement & **MBC – Brazilian Competitive Movement.**

The Competitive Movement mobilizes, trains and recognizes organizations promoting excellence in management and contributing to competitiveness and sustainability. It is a network formed by public and private organizations that share information and experiences in the areas of Quality and Productivity.

It coordinates and holds the MPE Brazil awards - Competitiveness Award for Micro and Small Companies

RESEARCH AND DIAGNOSTICS



Essential and indispensable tools for decision making, research generates information and knowledge capable of providing competitive advantages and allows advances in the context of management.

CUSTOMIZED SOLUTIONS

With the objective of identifying the opportunities for improvement in the management of companies and public organizations, the IBQP carries out the Business Diagnosis with the support of the best professionals in the labor market. In addition to identifying management gaps, we offer the implementation and application of techniques and tools for continuous improvement of Quality and Productivity. Our goal is to transfer knowledge and management tools to companies. Therefore denominated as a Sociotechnical Extension and not consulting.



EVENTS



In order to promote aspects related to **quality, productivity, innovation, sustainability and entrepreneurship**, we are specialists in the promotion of events, seminars, conferences, workshops and other participation of all sizes for different segments and the most diverse public.

HEI!HUB

Created in 2014, the IBQP Innovation Center, or HEI! (IMPACT ENTREPRENEURSHIP HUB) has the purpose of hosting startup companies, providing lectures, mentoring and training, which are in the lines of action of the IBQP, allowing them to have contact with the main actors involved in the process of their development from their first stage (entrepreneurial ecosystem).



HEI!HUB



- 16 companies
- Diverse levels of maturity





The Brazilian Institute for Quality and Productivity

+55 (41) 3264-2246

+55 (41) 3264-2270

ibqp@ibqp.org.br

www.ibqp.org.br